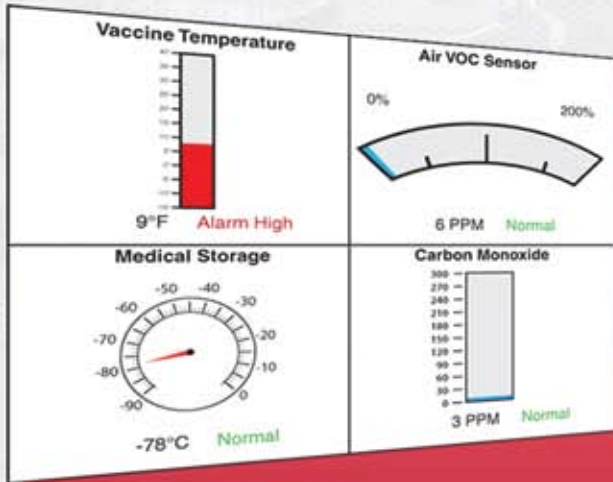




Add Sensors To Your Video

SensaVIDEO provides an easy way to bring real time sensor values into your existing video surveillance system



INTRODUCTION

The SensaVideo system is designed to provide an easy way to bring real time sensor values into a video surveillance system. The internet browser-based programming makes the device easy to use from any computer on your network. Monitored conditions can include temperature, humidity levels, line voltage, leak detection, UPS systems, and more. The system allows multiple users to be notified immediately of any detected problems. Notification can occur via e-mail or SMS (text message).

Status
Local indication of sensor alarm status.

Video Output
Analog camera emulation to bring sensor values into an existing DVR.

Sensor Inputs
Up to four analog sensors can be connected to measure a variety of conditions.

Relay Output
A typical relay contact that trips when any sensor exceeds pre-programmed limits.

Ethernet Port
Provides IP camera emulation to bring sensor values into an existing NVR, and also used for web-based programming configuration.



Power
Standard 12DC power input similar to most cameras.

ALARMING



Video Image

The value of the sensor within the graphic image turns red when the sensor value is in alarm. There is also a portion of the image that shows the word "Alarm" that can be used to generate a video motion response from a DVR or NVR.



SENSORS



Accepts Four Sensors:

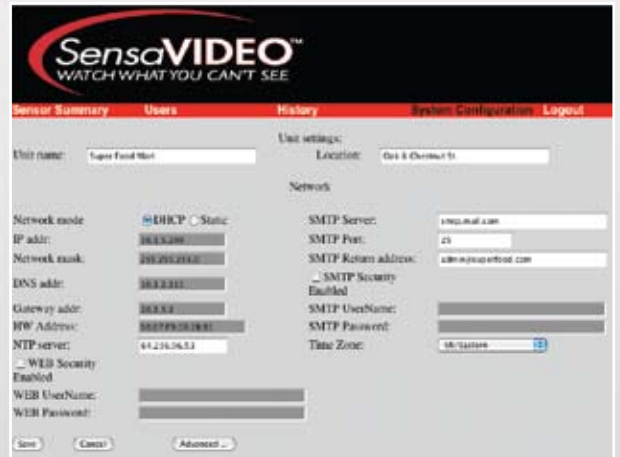
- Temperature sensors available to measure from -109°F (-85°C) to 168°F (76°C).

- Can read from any third party 4-20mA analog transducer and scale to real engineering units. Practically unlimited availability of sensors to choose from.

- Also accepts standard contact sensors.

- Programmable high and low alarm thresholds.
- Each sensor is independent with its own configuration, measurement, and alarming.
- Various graphic images can be chosen to represent each sensor.

CONFIGURATION



Configuration for the SensaVideo is performed through a built-in web page. Just browse to the address of the product on your local network to have full access to all programming options. You can configure your sensor types, names, alarm limits, recognition times, notification responses, and more.

The screenshot shows the 'Sensor Summary' page of the SensaVideo web interface. It displays a table with sensor data:

#	Sensor Name	Sensor Type	Value	Status	Min	Max	Alarm Low
1	Refrigerator	TempF-2.5k	37.9 Deg F	Normal	36.2	38.0	33.0
2	Humidity	4-20ma	45.1 %RH	Normal	45.0	45.1	40.0
3	Fuel Level	4-20ma	32.1 Gal	Normal	32.0	32.1	25.0
4	Freezer	TempF-2.5k	7.8 Deg F	Normal	6.0	7.9	-10.0

The internal web page also gives you access to historical data trending information from the sensors.



Contact closure to trip other alarm system, or local visual indication

Relay Output

There is a built-in relay that will engage when any sensor alarm occurs.



E-Mails & Text

Direct Notification

A series of automatic e-mails and text messages can be sent from the SensaVideo to inform the appropriate personnel on an alarm condition.

ANALOG VIDEO INTEGRATION

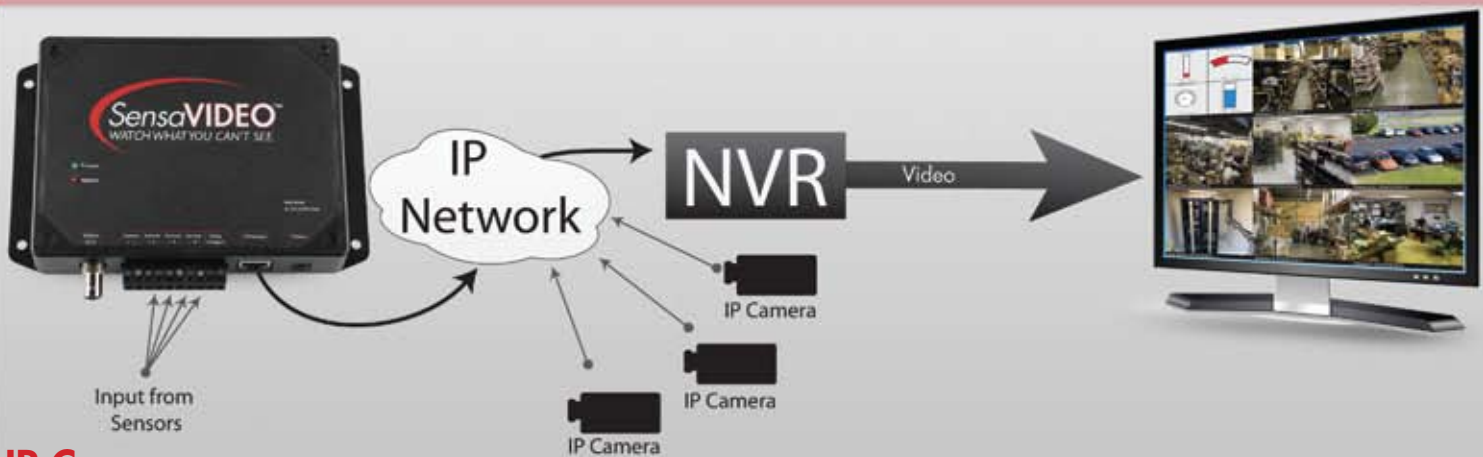


Analog Camera Emulation

By emulating an analog camera, the SensaVideo can place the sensor status images together with your other security camera images. There are no compatibility issues since the SensaVideo appears to the DVR as just another camera. The result is that all of your monitored sensors and cameras are viewed in one place.

Create Your Own Dashboard!

IP VIDEO INTEGRATION



IP Camera Emulation

In addition to emulating an analog camera, the SensaVideo system can also emulate an IP camera. You can bring your sensor information directly into any NVR system with no drivers, or custom interfacing at all. Just treat the SensaVideo like any other IP camera and combine your sensor readings with camera images.

SENSORS



WEATHERPROOF LOW TEMPERATURE SENSOR

Small, sealed, general purpose temperature probe. Good for low temperatures. Temperature range: -109° to 115°F

FGD-0101 Weatherproof Temperature



WEATHERPROOF WARM TEMPERATURE SENSOR

Small, sealed, general purpose temperature probe. Good for warmer temps. Temperature range: -87° to 168°F

FGD-0102 Weatherproof Temperature



INDOOR DECORATOR ZONE TEMPERATURE SENSOR

Offers precision room temperature sensing in an attractive wall mounted enclosure. Temperature range: 35° to 140°F

FGD-0103 Decorator Zone Temp Sensor



OUTDOOR AIR WEATHERPROOF TEMPERATURE SENSOR

A sensitive temperature element with a stainless steel tube sheathe. Temperature range: -30° to 140°F

FGD-0104 Air Temp Sensor



IMMERSION TEMP SENSOR

A waterproof temperature sensor for measuring the temperature of fluids inside a pipe. Temperature range: 10° to 230°F

FGD-0105 Immersion Temp Sensor



REFRIGERATOR/FREEZER TEMPERATURE SENSOR

Glass bead filled vial will buffer any momentary fluctuations that may cause a preliminary alarm. Temperature range: -109° to 115°F

FGD-0107 Temp Sensor w/ Glass Bead Vial



ANALOG HUMIDITY TRANSMITTER

A low profile humidity transducer that transmits humidity levels for programmable high and low limits.

FGD-0052 Humidity Transmitter



ZONE WATER DETECTOR

Is for use in detecting the presence of water on a floor or in a false ceiling. Comes with 10' of water rope.

FGD-0056 Zone Water Detector



SPOT WATER DETECTOR

Is for use in detecting the presence of water on a floor or in a false ceiling.

FGD-0013 Spot Water Detector



FLOAT SWITCH

Plastic side mounted float switch that is effective in small tanks.

FGD-0222 Float Switch



CARBON MONOXIDE SENSOR

Allows users to monitor levels of carbon monoxide from 0-300ppm.

FGD-0065 Zone Water Detector



AIR QUALITY SENSOR

Allows users to monitor levels of air pollution from 0 to 100%.

FGD-0066 Air Quality Sensor



CARBON DIOXIDE SENSOR

Allows users to monitor levels of carbon dioxide from 0-2,000ppm.

FGD-0068 Zone Water Detector

ALSO COMPATIBLE WITH THIRD PARTY SENSORS

SPECIFICATIONS

Sensor Inputs

Number of Inputs: 4

Input Connector: Terminal block

Input Types: N.O./N.C. contact,

- 2.8K Thermistor (-109° to 115°F, -85° to 57°C)
- 10K Thermistor (-87° to 168°F; -66° to 76°C)
- 4-20mA (-999.0 to 999.0)

Input Characteristics: 10k Ω to 3.3V (temperature/contact) or 250 Ohms to ground (4-20mA)

A/D Converter Resolution: 12 bits \pm 2 LSB

Video Output

Analog: Composite NTSC/PAL, BNC connector

IP: MJPEG Motion JPEG

Network

10/100 BASE-T Ethernet RJ45

Relay Output

Rated for 1A 30VAC/ 1A 30VDC Maximum



Alarm Notification

E-mail – SMTP

Text Messages

Relay contacts

LED Indicators

Power On: On steady when the unit is powered on

Alarm: Off when no alarm exists.

Ethernet Link and Activity LEDs

Power Supply

Power Supply: 120VAC/12VDC 50/60Hz 6W wall plug-in transformer w/6' cord.

Power Consumption: 4 Watts

Environmental

Operating Temperature: 32° to 122°F (0° to 50°C)

Operating Humidity: 0–90% RH non-condensing

Physical

Dimensions: 7.3”h x 5.5”w x 1.5”d

Weight: 1.0 lbs.

Enclosure: Indoor-rated plastic housing suitable for wall or desktop installation.

Specifications subject to change without notice.

Patent Pending • LIT-1012 B

SensaVIDEO™

901 TRYENS ROAD
ASTON, PA 19014
PH: 877-373-2700
F: 610-558-0222
WWW.SENSAVIDEO.COM

Distributed By:

Manufactured by Sensaphone • www.sensaphone.com